

DOKTORVOLT®

Wallbox
V.2



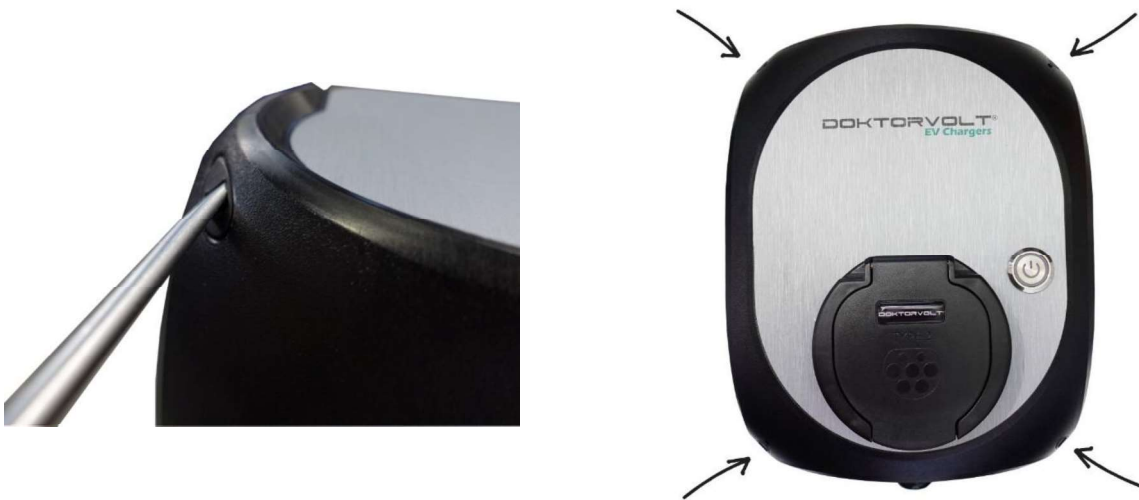
EN
DE
PL

WALLBOX charger for EV
DV-9574-EV

- ➔ **The charger should be disconnected from the power source before installation, configuration or cleaning!**
- ➔ **Installation should only be performed by a qualified installer in accordance with local electrical regulations!**

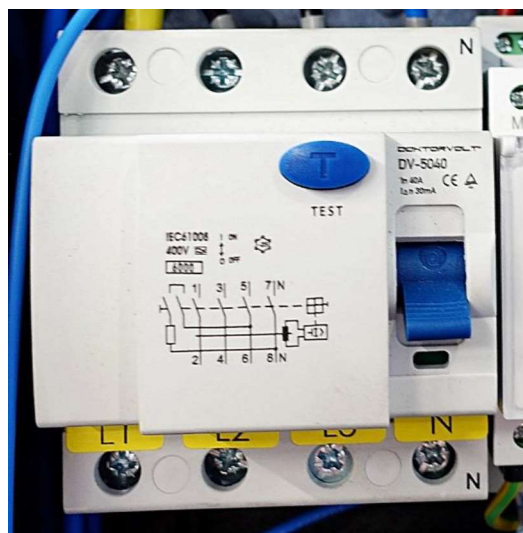
0. Open the housing

Before starting, always ensure that the device is shut down.
To remove the case, unscrew the 4 screws holding the top of the case to its base.
Gently open the case.



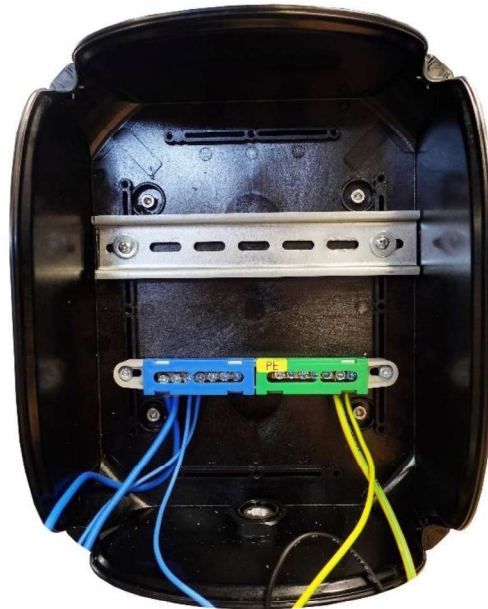
1. Preparation

For this purpose, the RCD must be in the 0 or lower position.



2. Wall mounting

Remove the devices mounted on the TH rail. You will then be able to see the 4 places prepared for mounting the wallbox, as shown in the picture below:



3. Power supply

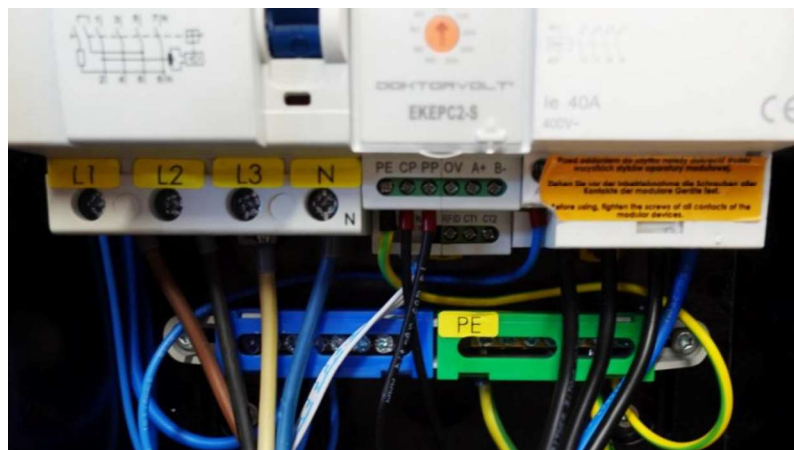
Fit the gland that comes with the charger or run the power cable (cross-section: min. 5x4mm²) through the factory fitted gland. Run the power cable through the factory-installed gland or, if there is no factory-installed gland, find one in the housing.

Insulate the end of the cable and crimp the individual conductors with sleeve lugs with a diameter that matches the conductor diameter. The wires should be connected to the appropriate locations marked with yellow markers:

- The phase wires (brown, black, gray) should be connected to the residual current device (RCD) to the input marked L1, L2 and L3.

- The neutral wire (blue) should be connected to the residual current device (RCD) to the input marked N,

- Screw the protective conductor (yellow-green) to the earthing slats (of the same color) marked with the letters PE.



4. Switch the charger on



Switch on the residual circuit breaker (RCD).

If the protection in the up position (they will not blow), close the enclosure and fasten the screws.

Click the ON/OFF button 

The LED on the button flashes at first then goes out and does not light up.

5. Connect the car

Connect your car with the appropriate cable with plug (TYPE2) to the charger.




6. Starting the charge

Insert the cable plug into the wallbox socket using the correct amount of force. This must be done correctly, as this connection affects the flow of electricity and control signals. Charging will begin when you hear the characteristic "click", (it can take up to 10 s to start charging)




When the charging process starts, the LED button starts to light up.
The charging power is programmed and is up to a maximum of 22kW depending on the model.

7. Error during charging

In the event of an error, click ON OFF , wait a few seconds and switch the charger on again

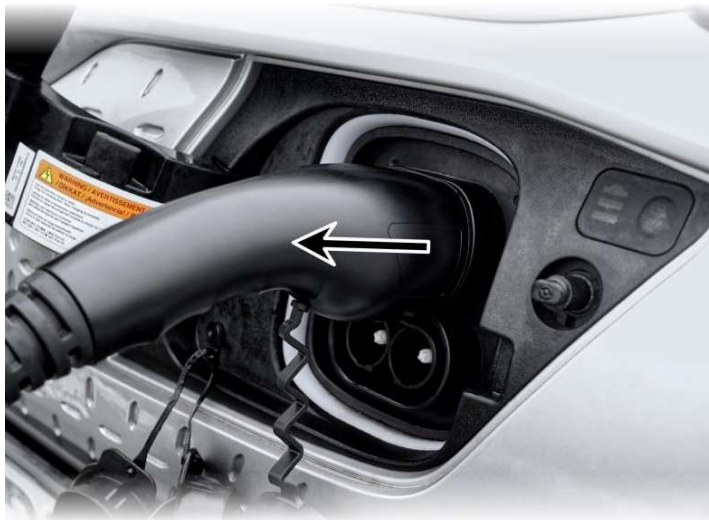
8. Turning off the charger

Switching off the charger can be done by pressing the ON/OFF button .
When the car has been charged the charger will automatically switch off.

Click the ON/OFF button 



Remove the charging cable from the car.



FOLLOW THE SEQUENCE OF INSTRUCTIONS ABOVE, OTHERWISE THE CHARGER MAY BE DAMAGED AND PUT THE USER IN DANGER.

Before starting the charging station, a qualified electrician must check that the circuit breaker installed in the charger does not adversely affect the installation in the building
Breaking the product seal will void the product warranty. The seals are attached to components that do not need to be replaced by the user.

If these technical conditions are not fulfilled, **Doktorvolt** and its partners will not be held responsible for any resulting damage.

If the technical conditions do not meet your requirements, please contact us immediately so that we can find a solution together.

In case of defects, we are at your disposal at any time.

We wish you pleasant use and look forward to your recommendation.

GENERAL INSTRUCTIONS FOR ELECTRICAL EQUIPMENT

1. If you purchase any electrical equipment you should read and strictly follow the operating instructions.
2. Use only fully functional electrical equipment that is properly connected to the electrical system
3. Damaged equipment should be returned for repair to an authorized person or service, which guarantees that the damage will be repaired in a manner ensuring further safe operation of the device.
4. Do not operate electrical equipment with wet hands or standing on a wet floor; in wet rooms and other rooms with increased risk of electrical shock. It is unacceptable to use hand tools which are not equipped with double insulation.
5. Do not use makeshift connections, do not connect the cables by twisting the ends of the cables and leaving them in an uninsulated state,
6. Never remove covers (casings) from electrical devices that are connected to the electrical network (e.g. do not remove the back cover; do not change the type of plug installed at the cords of portable devices, e.g. do not replace the plug with a protective contact with a plug without such a contact,
7. In rooms where small children may be unattended, sockets should be secured to prevent insertion of objects that could result in electric shock,
8. Electrical equipment should be positioned so that flammable objects cannot come into contact with it, e.g. things, paper, flammable materials. When switching electrical appliances on or off, make sure that the correct plug is inserted or removed.
9. Any tampering with the charger's components will void the warranty.